

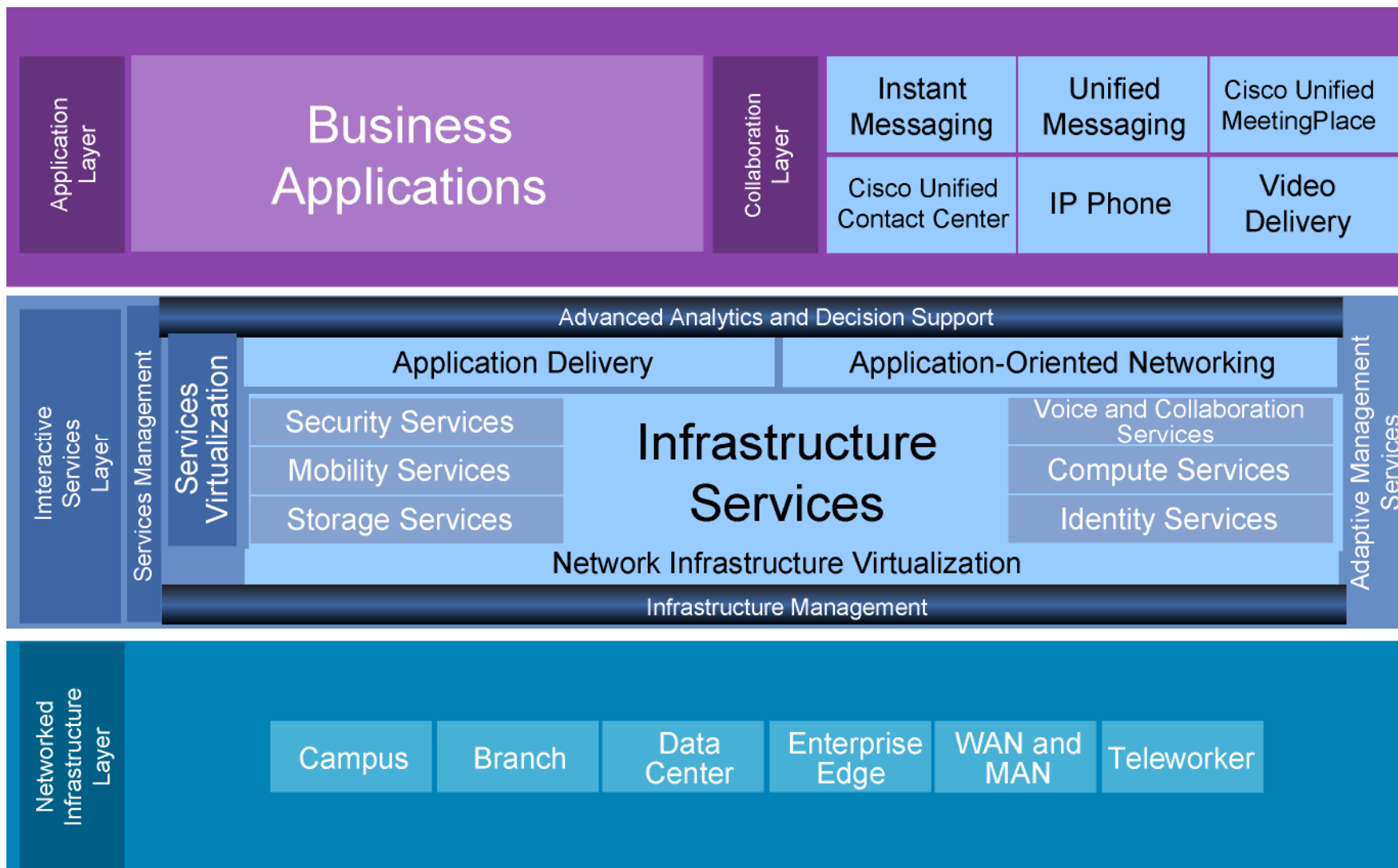


# Using a Modular Approach in Network Design



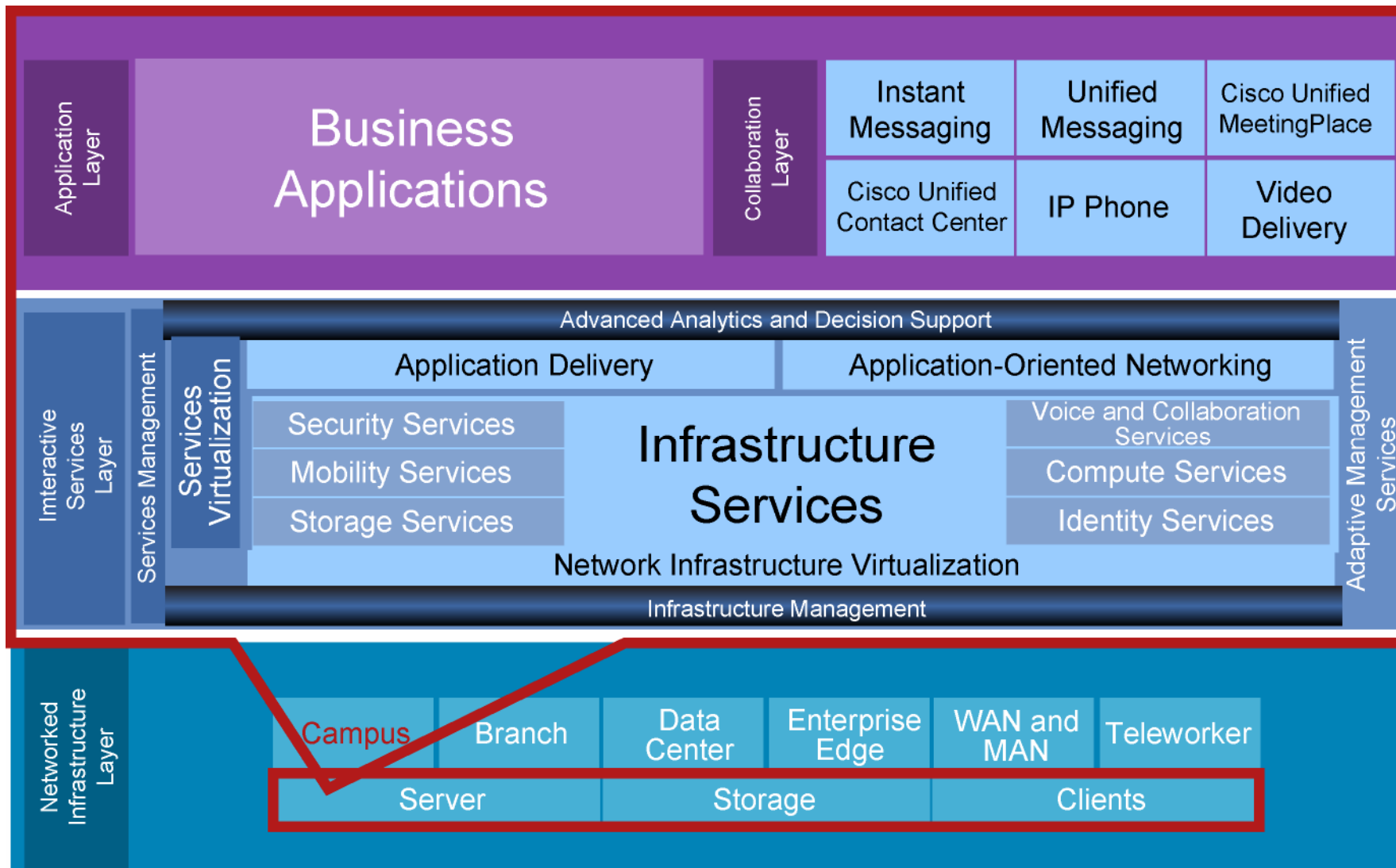
## Structuring and Modularizing the Network

# Service-Oriented Network Architecture



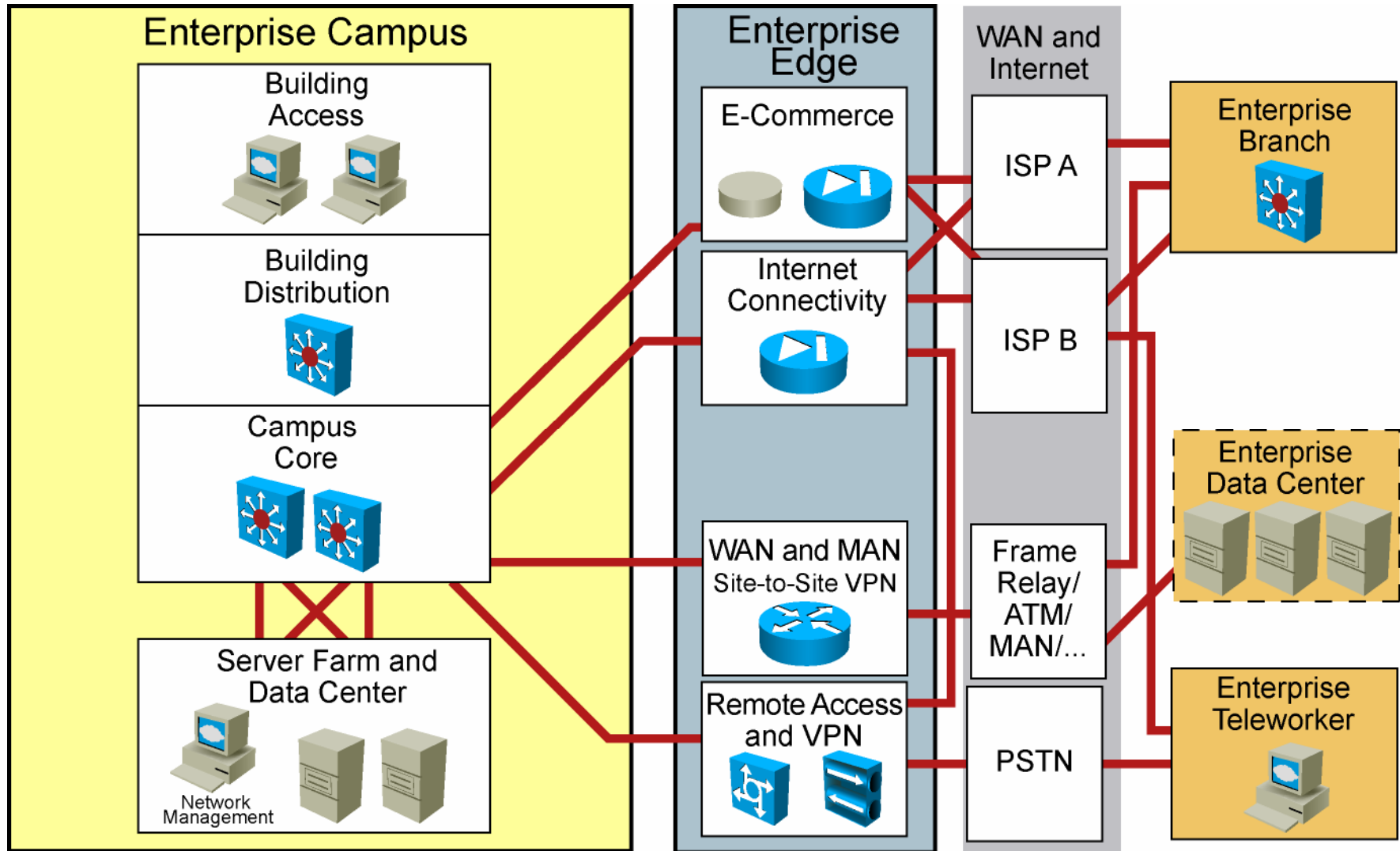
004P\_012

# Example: Cisco Enterprise Campus Architecture



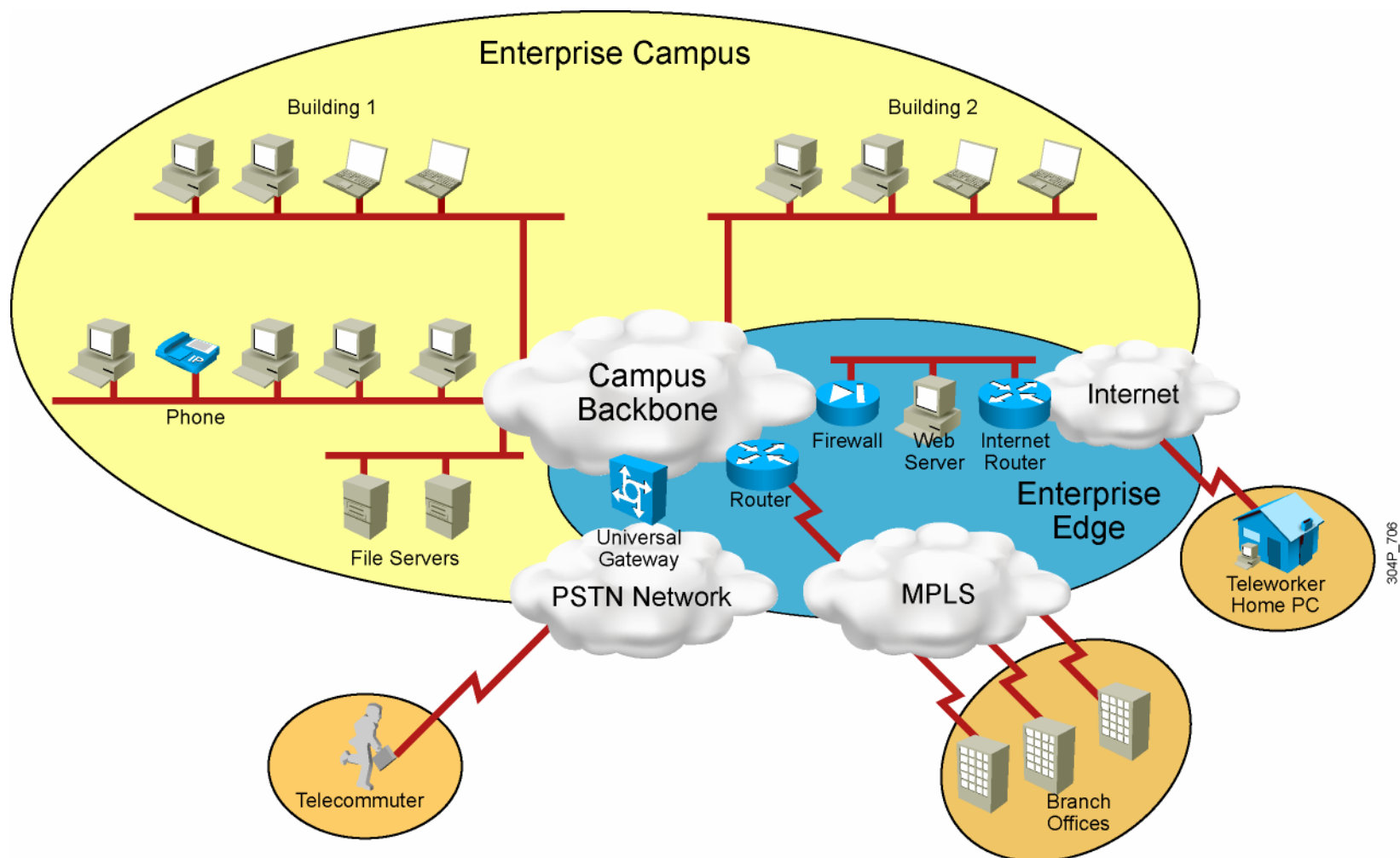
004P\_011

# Cisco Enterprise Architecture



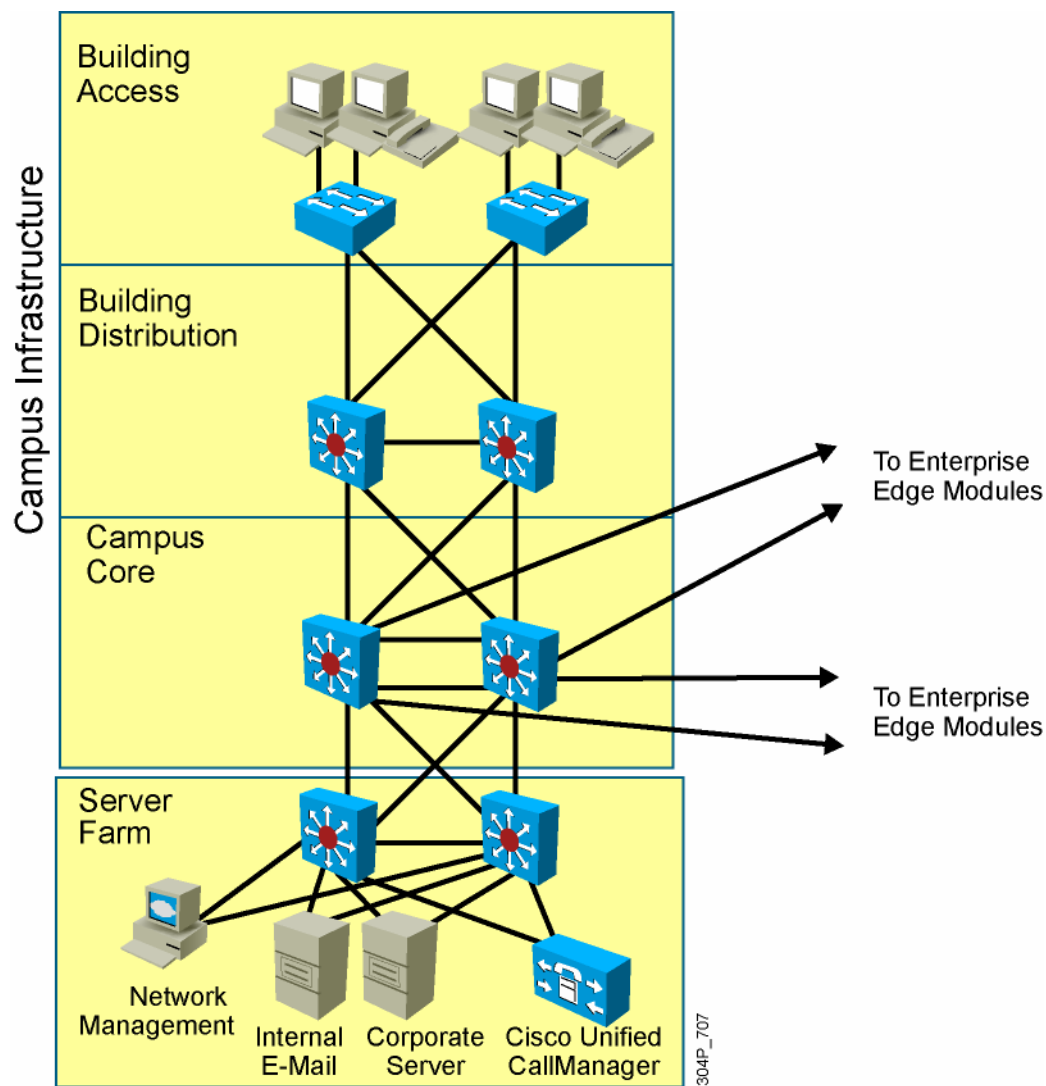
304P\_700

# Example: Dividing the Network into Areas

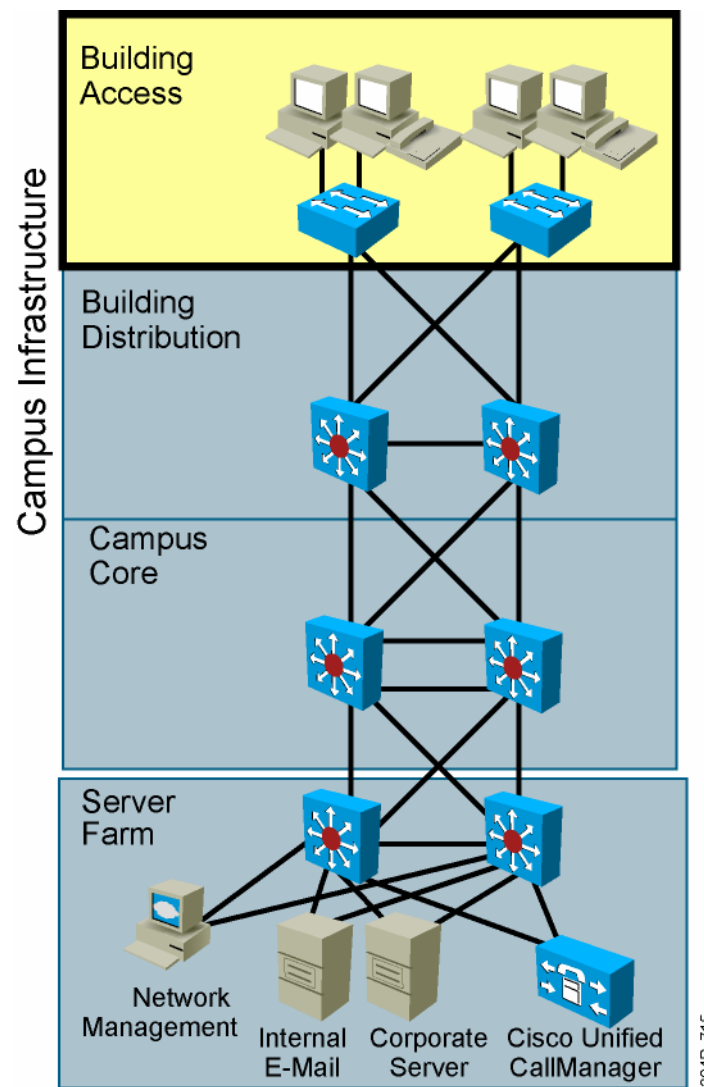


304P\_706

# Enterprise Campus Infrastructure Module

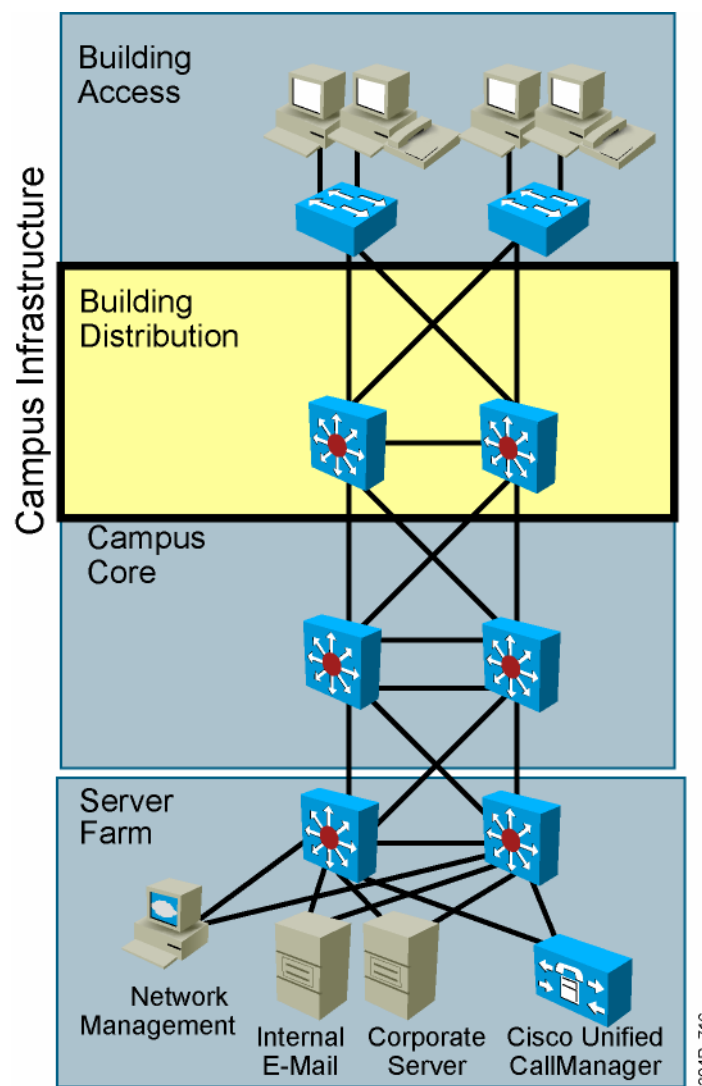


# Building Access Layer



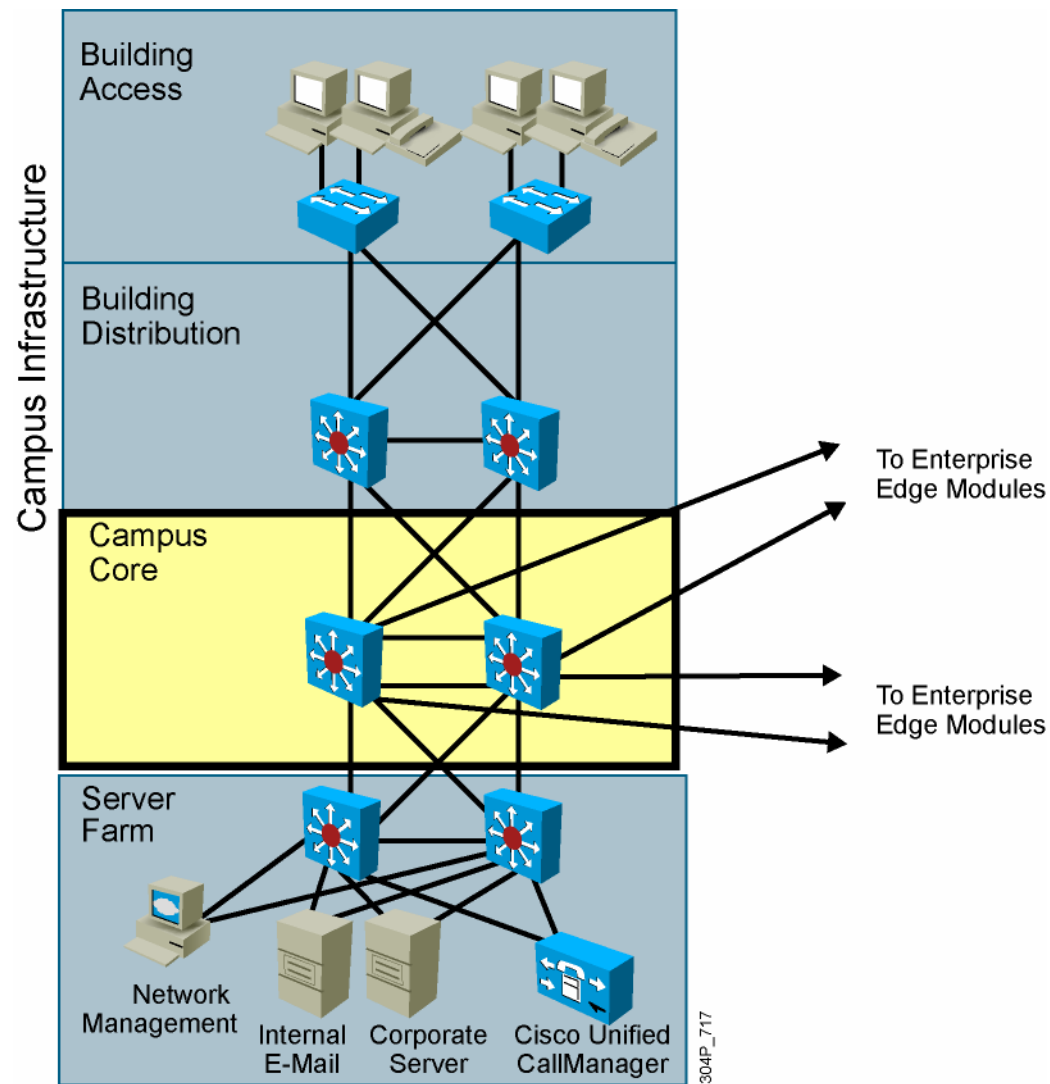


# Building Distribution Layer



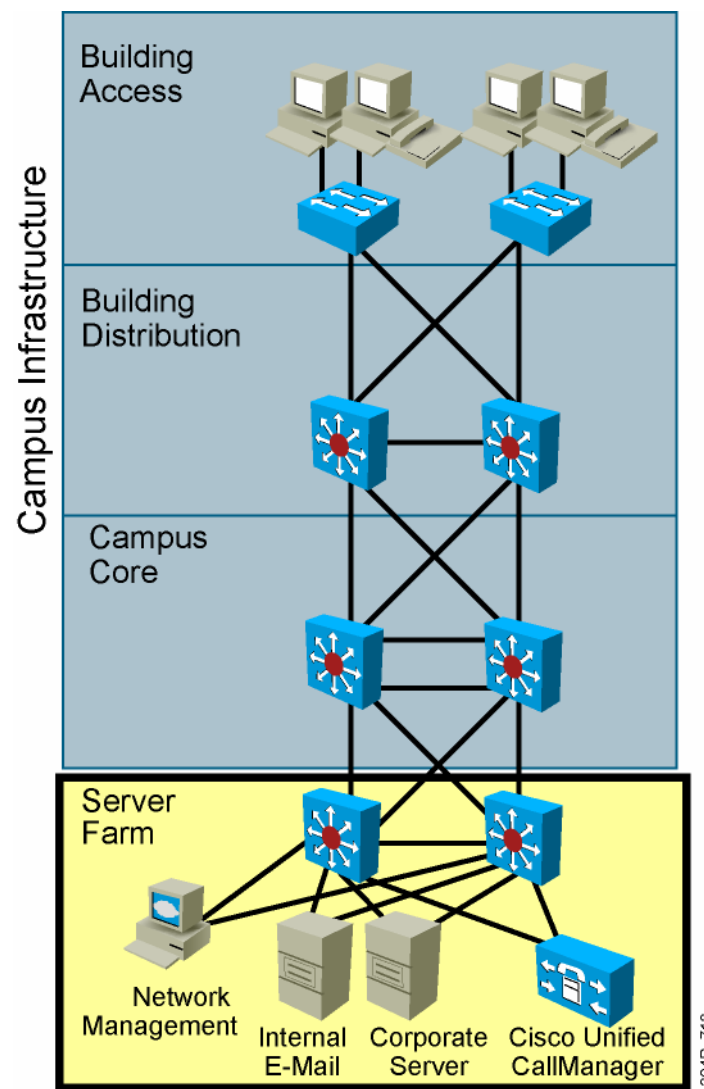
304P\_716

# Campus Core Layer

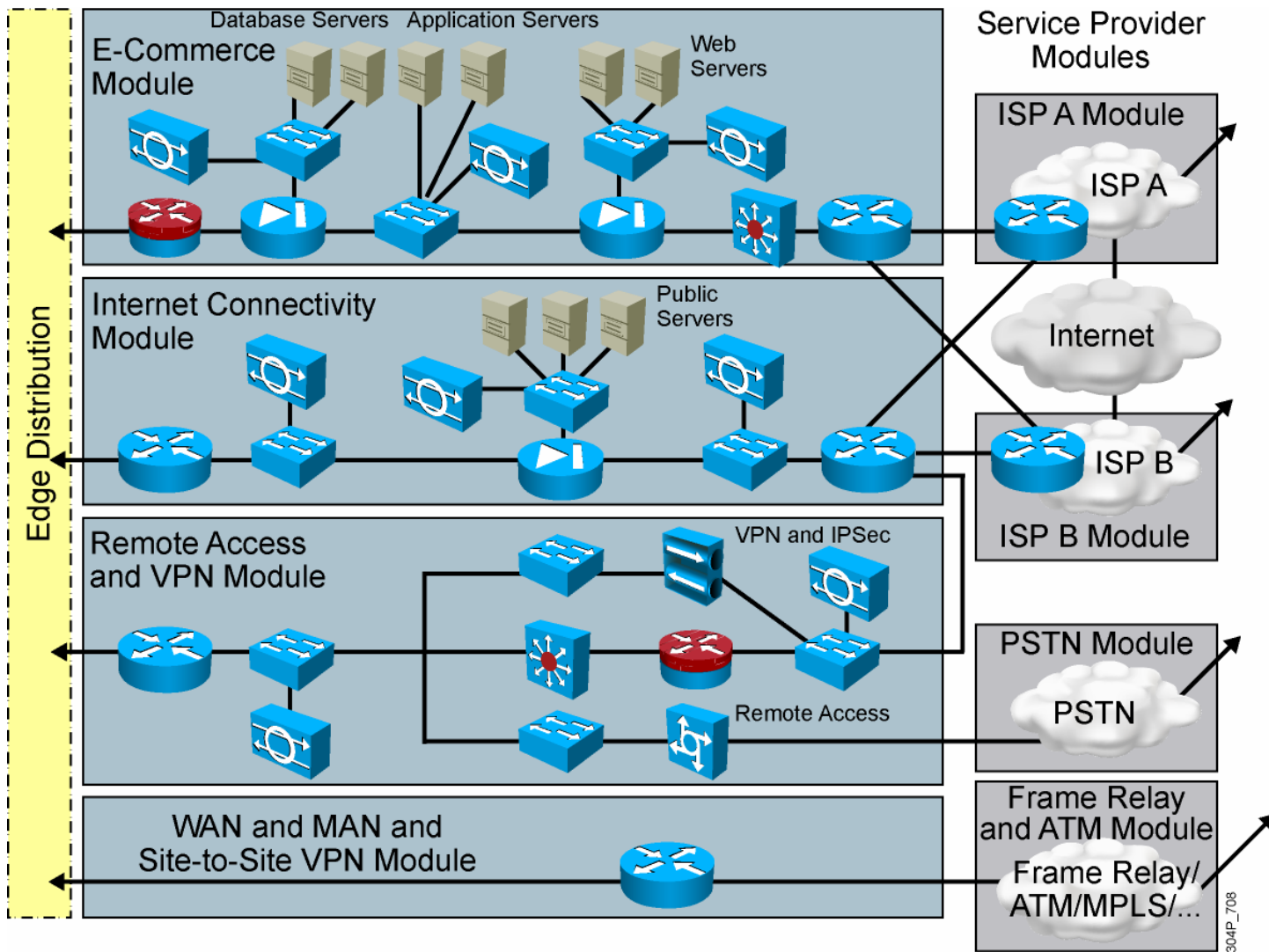


304P\_717

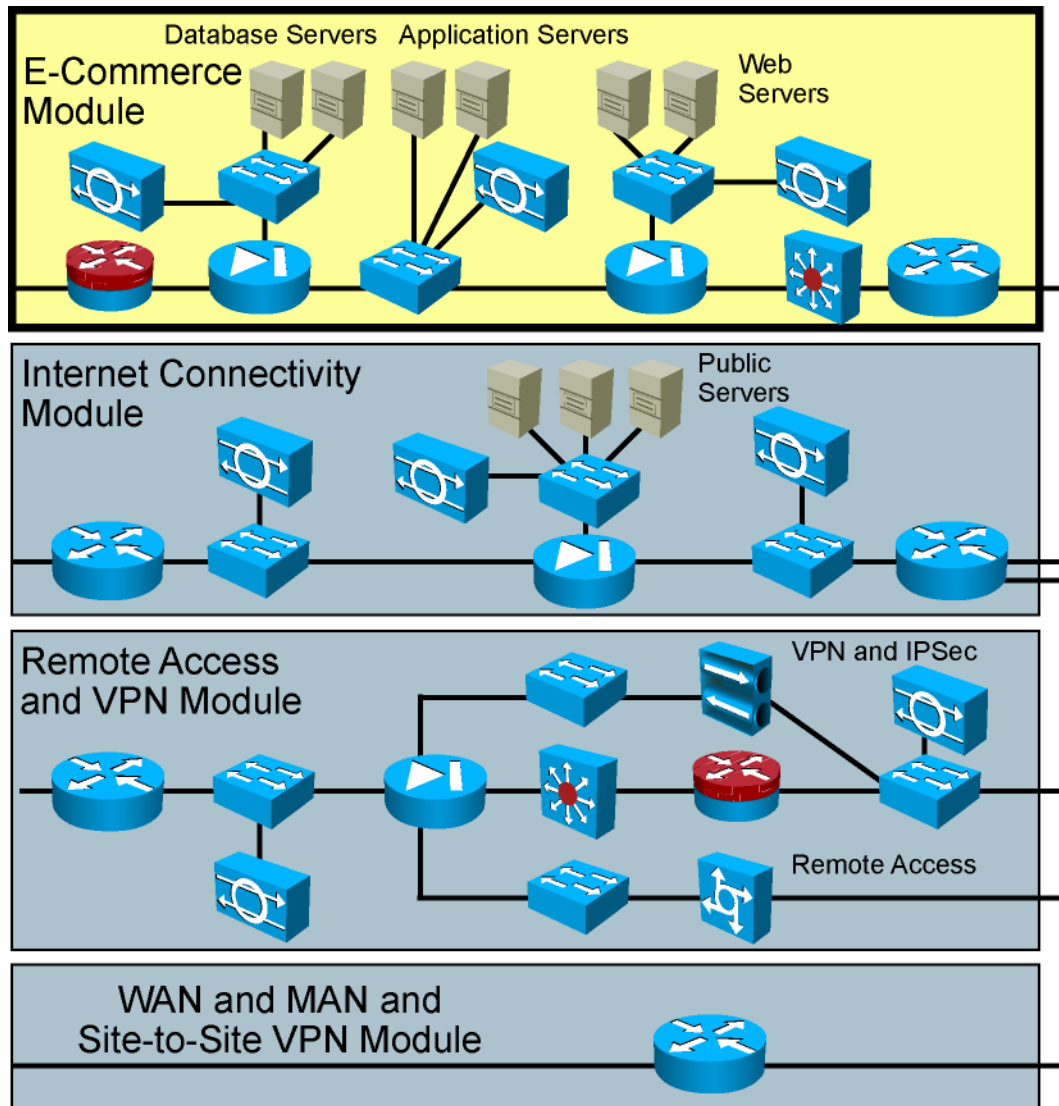
# Server Farm Module



# Enterprise Edge Modules

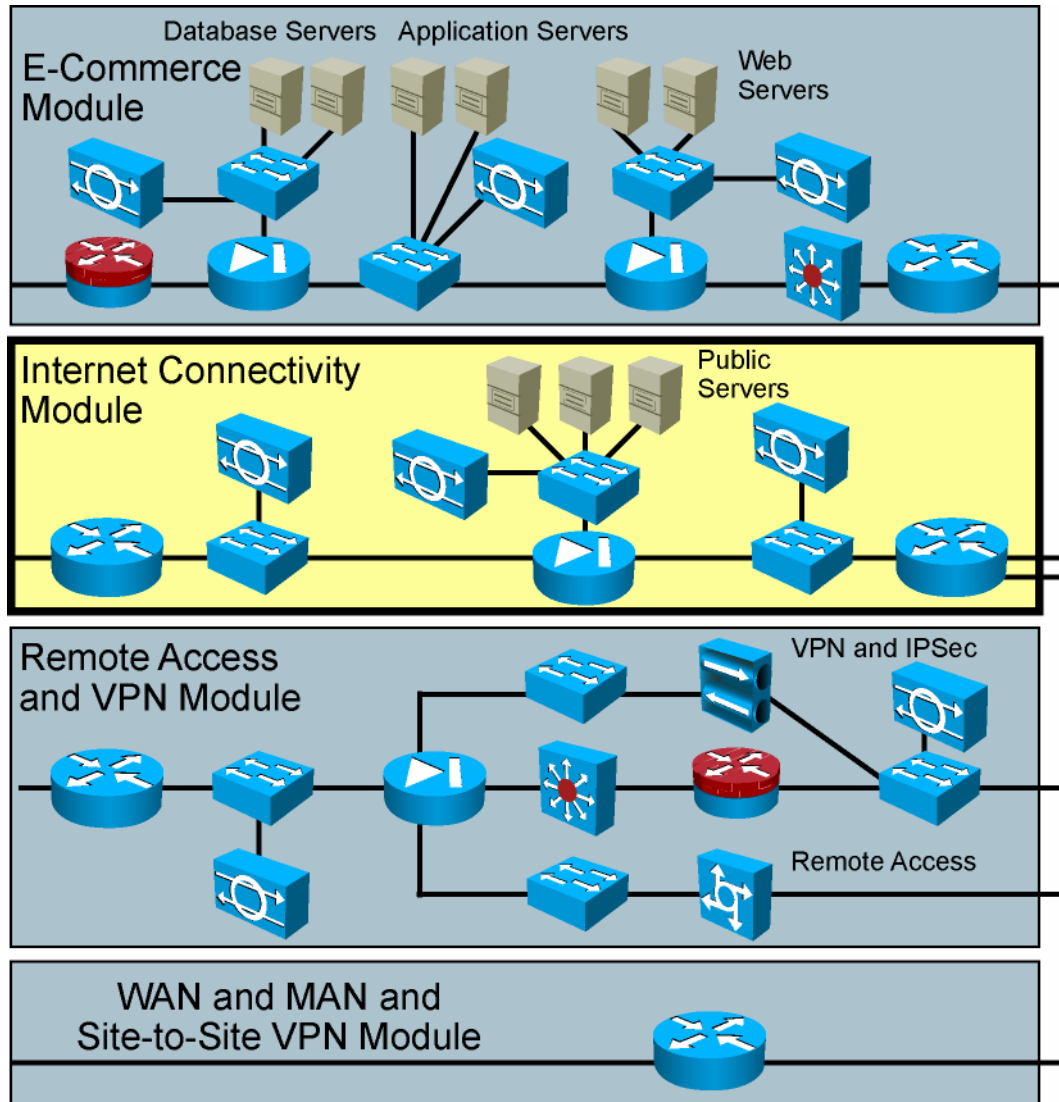


# E-Commerce Module



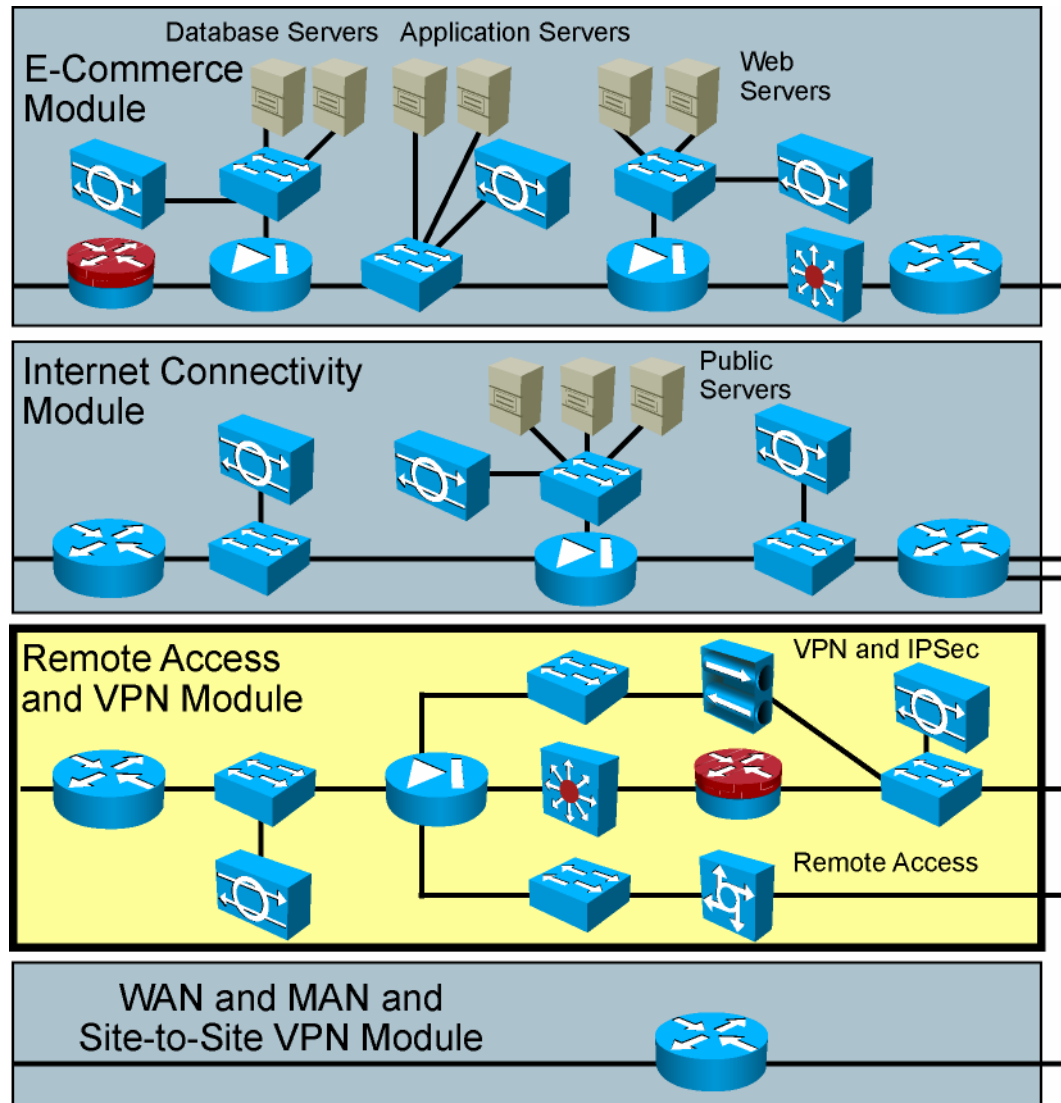
304P\_719

# Internet Connectivity Module



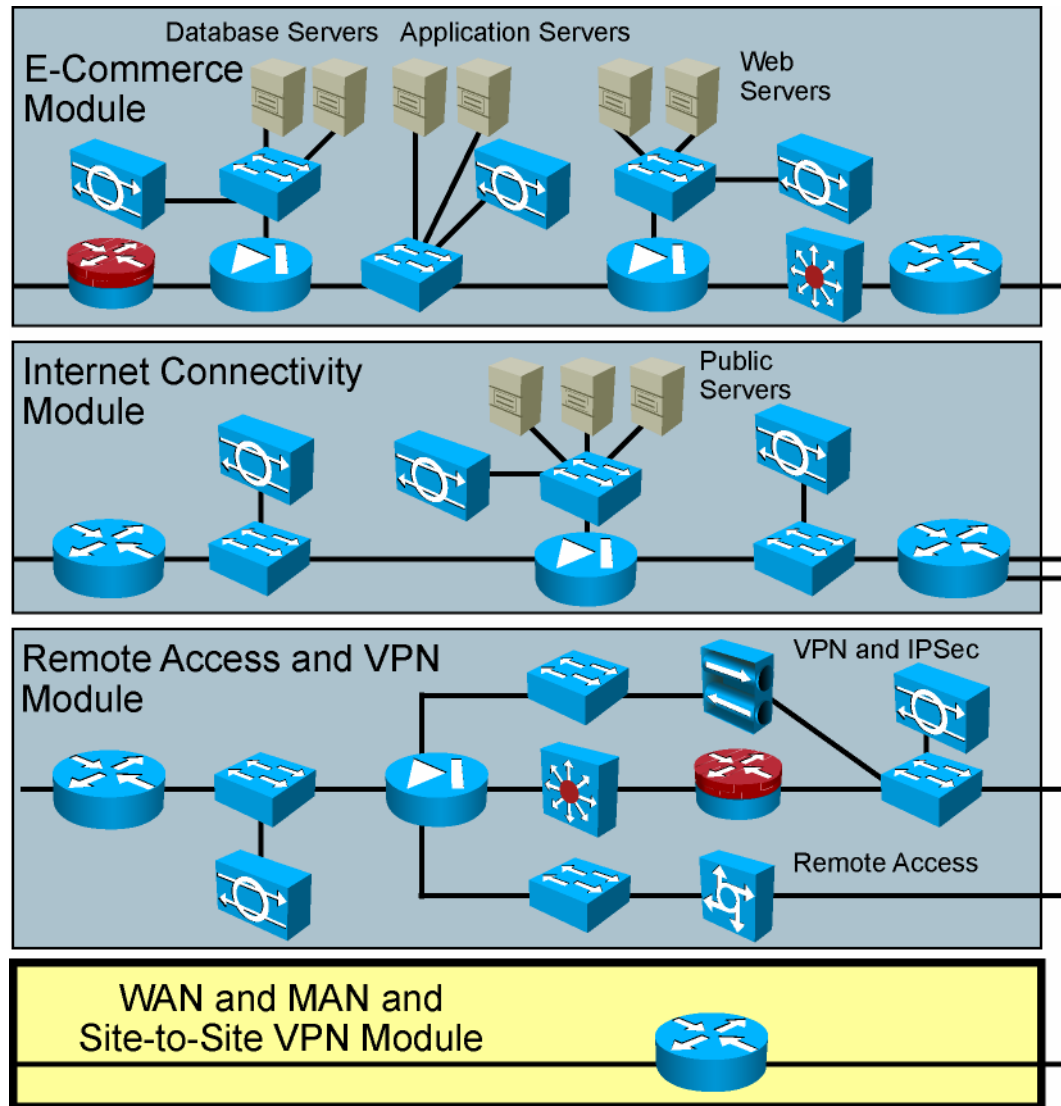
304P\_720

# Remote Access and VPN Module



304P\_721

# WAN and MAN and Site-to-Site VPN Module



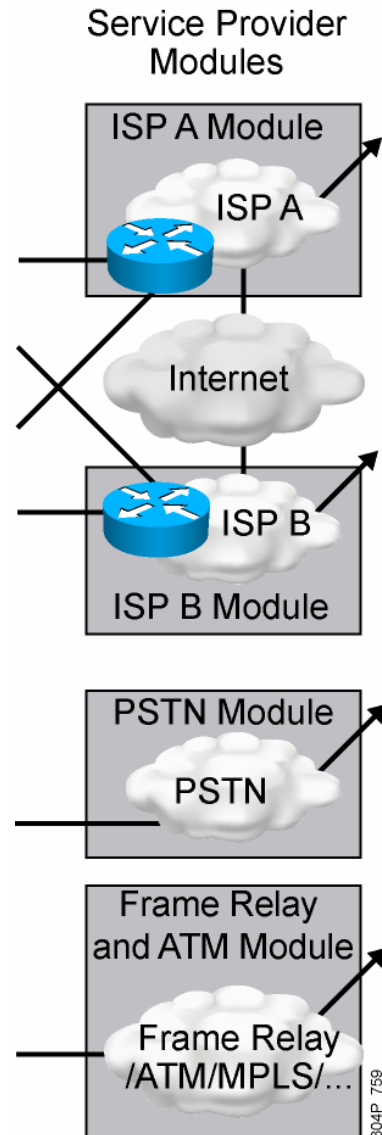
304P\_722



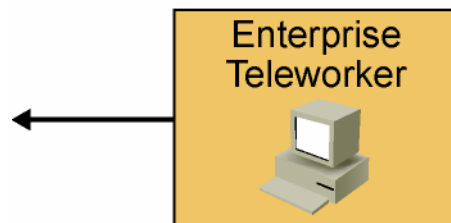
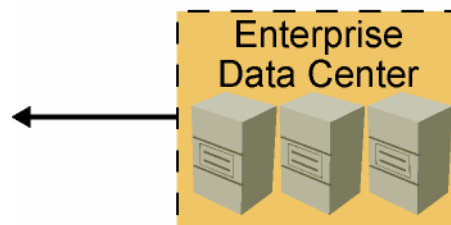
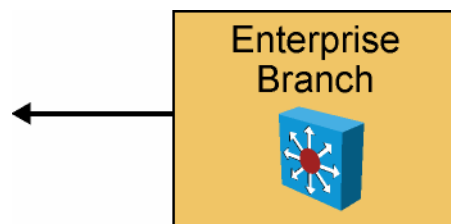
# Enterprise Edge Guidelines

1. Determine the connectivity needed to the Internet.
2. Create the e-commerce module ID needed.
3. Design the remote access and VPN module if needed.
4. Design the WAN module to support connections to remote enterprise locations if needed.

# Service Provider Modules

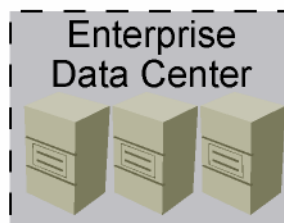
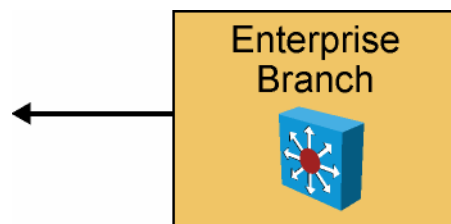


# Enterprise Remote Modules



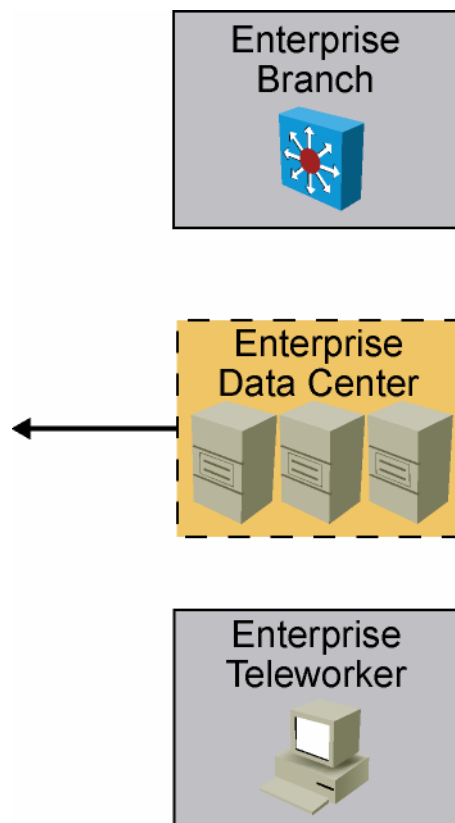
304P\_709

# Enterprise Branch Module



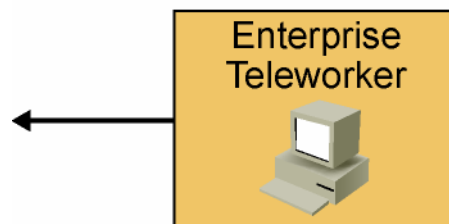
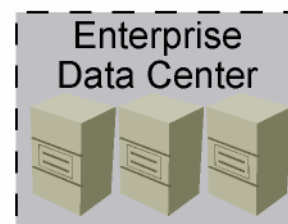
304P\_723

# Enterprise Data Center Module



304P\_724

# Enterprise Teleworker Module



304P\_725

# Summary

- Based on SONA, the Cisco Enterprise Architecture provides a modular enterprise-wide hierarchical approach for providing network infrastructure and services to all places in the network.
- The enterprise campus infrastructure module includes the campus infrastructure module and the server farm module.
- The enterprise edge modules include the e-commerce module, the Internet connectivity module, the remote access and VPN module, and the WAN and MAN and site-to-site modules.
- The remote enterprise modules include the remote branches, data centers, and teleworkers.